

Convenient  
**HEALTHCARE**  
for the Entire Family!



**Watson Clinic Family Medicine** specialists

**Jeremy M. Katzmann, MD, FAFP,**

**Amanda Lewis, APRN** and **Deanna Riley, APRN**

provide attentive and compassionate healthcare services for patients ages 2 and up, such as treatments for various illnesses and injuries, annual physicals, preventive screenings, wound care, ongoing management of chronic conditions and weight loss treatments.

Conveniently located at **Watson Clinic Highlands** in south Lakeland, these expert specialists work in collaboration to offer convenient appointment availability that accommodates your schedule and particular medical needs, including **same-day sick care visits**.

Call **863-680-7190** or visit  
**MyChart at Watson Clinic LLP** at  
**[www.WatsonClinic.com/Portal](http://www.WatsonClinic.com/Portal)**  
to schedule an appointment.

**WATSON CLINIC** LLP

*Highlands*

2300 E. County Road 540A | Lakeland, FL

**Jeremy M. Katzmann, MD, FAAFP, Amanda Lewis, APRN and Deanna Riley, APRN** provide open appointment availability, and a roster of essential healthcare services for family medicine patients of all ages.

## **Jeremy M. Katzmann, MD, FAAFP\***



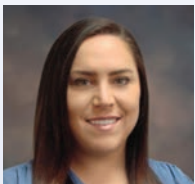
### **EDUCATION**

- University of Wyoming, Laramie, WY, BS, Zoology and Physiology
- Creighton University School of Medicine, Omaha, NE, MD
- North Colorado Family Medicine, Sunrise Community Health Center, Greeley, CO, Residency, Family Practice

### **PROFESSIONAL ACTIVITIES & MEMBERSHIPS**

- Fellow, American Academy of Family Physicians
- American Board of Family Medicine Certification
- Medical Director, Bartow Regional Medical Center Wound Care & Hyperbaric Medicine
- President of the Medical Staff, Bartow Regional Medical Center 2017-2021
- Florida Academy of Family Physicians
- American Academy of Family Physicians
- Geneva Classical Academy Girls High School Basketball Coach

## **Amanda Lewis, APRN**



### **EDUCATION**

- Florida Southern College, Lakeland, FL, BSN
- University of South Florida, Tampa, FL, MSN

### **PROFESSIONAL ACTIVITIES & MEMBERSHIPS**

- Polk County Advanced Practice Nurses Association
- American Association of Nurse Practitioners

## **Deanna Riley, APRN**



### **EDUCATION**

- Hillsborough Community College, Plant City, FL, ASN
- Chamberlain University, Chicago, IL, BSN
- Chamberlain University, Chicago, IL, MSN

### **PROFESSIONAL ACTIVITIES & MEMBERSHIPS**

- American Association of Nurse Practitioners
- Florida Association of Nurse Practitioners

**WATSON CLINIC** LLP

*Family Medicine*

\*Se Habla Español

**Appointments: 863-680-7190**

*Telemedicine appointments also available through MyChart.*

**Watson Clinic Highlands**

2300 E. County Road 540A | Lakeland, FL 33813

**WatsonClinic.com**